



Pembridge Road

Bovingdon, HP3 0QJ

£1,600 Per Month

FOR RENT! EXTENDED THREE-BEDROOM SEMI-DETACHED FAMILY HOME. Recently redecorated for new tenants to enjoy living in a conveniently central location to Bovingdon High Street. Close to schools and transport links this property offers three good sized bedrooms, two of which offer built in storage and all have access to two bath/shower rooms. A separate fitted kitchen joins on to the large lounge/dining area making this house perfect for seasonal entertaining with friends and family. Make the most of the private front and rear gardens, side access and the garage in-block. Available from February, viewings are recommended, call us today on 01442 976161 to for more information.

Viewing

Please contact our Bovingdon Office on 01923262666 if you wish to arrange a viewing appointment for this property or require further information.

- Three Bedrooms
- Two Bath/Shower Rooms
- Redecorated
- Garage In Block
- South Facing Rear Garden
- Extended
- Charming Village Location
- Available February 2023
- Deposit £2019.25
- Holding Fee £403.85



3



2

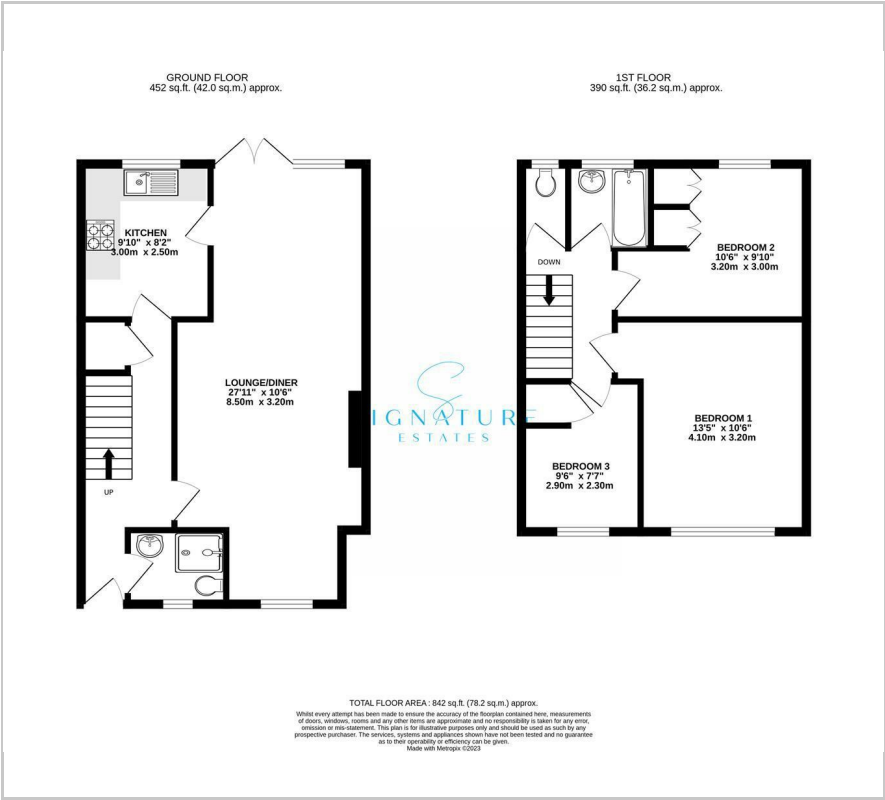


1



D

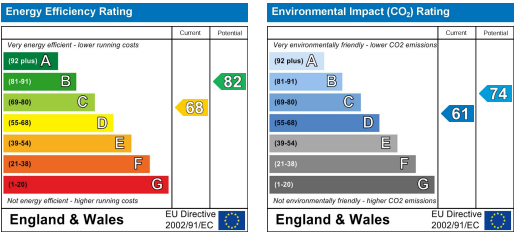
Floor Plan



Area Map



Energy Efficiency Graph



These particulars, whilst believed to be accurate are set out as a general outline only for guidance and do not constitute any part of an offer or contract. Intending purchasers should not rely on them as statements of representation of fact, but must satisfy themselves by inspection or otherwise as to their accuracy. No person in this firms employment has the authority to make or give any representation or warranty in respect of the property.